

Conext SW Power Distribution Panels

Save time and money installing, and integrating SW system

The Conext™ SW Power Distribution Panels are pre-wired out of the box and labeled to support the integration of Conext SW inverterchargers with a Conext MPPT Solar Charge Controller, battery bank and load centers. Designed to save installers significant time, effort and costs on every installation, the Distribution Panels offer excellent value when compared to customized options.

The solution set includes a DC distribution panel complete with a pre-installed 250 A DC breaker and additional breaker slots for integrating multiple DC power sources. AC distribution panels are also available for 120/240 VAC and 230 VAC requirements, pre-installed with multiple AC breakers for integrating AC power sources and loads. Each AC panel also supports the integration of fuel-based generators providing a central load center for managing an installation's AC power needs.

Why choose Conext SW Power Distribution Panel?



Higher return on investment

- Integrate SW inverterchargers and MPPT Solar Charge Controllers with a single battery bank
- Repeatable standard installation that saves time and money



Flexible

- Additional DC and AC breaker slots available for expanded capacity
- Key holes available on side of DC panel for integrating MPPT60 Solar Charge Controller
- Use AC distribution panels as optional load centers



Easy to service

- Breaker configuration allows SW inverterchargers to be AC bypassed for servicing
- Removable front cover allows for visual inspection



Easy to install

- Wall mount – AC distribution panels can be installed directly above or underneath the SW invertercharger
- Add additional SW inverterchargers with Conext SW invertercharger stacking kit



SW DC Power Distribution Panel



SW AC Power Distribution Panel
(120/240 V)

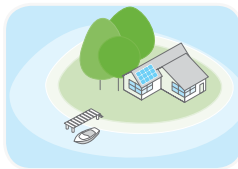


SW AC Power Distribution Panel
(230 V)

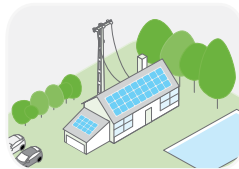
Product applications



Residential backup power



Off-grid solar



Self-consumption

Device short name	SW DC Distribution Panel
Product dimensions (H x W x D)	42.1 x 24.0 x 20.0 cm (16.57 x 9.45 x 7.87 in)
Shipping dimensions (H x W x D)	47.5 x 29.7 x 26.0 cm (18.7 x 11.7 x 10.24 in)
Shipping weight	9.0 kg (20.0 lb)
Product number	865-1016
Included	1 x Distribution Panel Box 1 x Distribution Panel Cover 1x 250-amp DC Breaker (pre-installed) 1x Positive copper bus bar (pre-installed) 1x Negative copper bus bar (pre-installed) 1 x Mounting bracket Expansion positions available for 2 x DC breakers
Device short name	SW AC Distribution Panel (120/240 VAC)
Product dimensions (H x W x D)	52.0 x 20.0 x 20.0 cm (20.5 x 7.9 x 7.9 in)
Shipping dimensions (H x W x D)	58.5 x 36.3 x 26.0 cm (23.0 x 14.3 x 10.24 in)
Shipping weight	11.0 kg (24.2 lb)
Product number	865-1017
Included	1 x Distribution Panel Box 1 x Distribution Panel Cover 2 x Double-pole 30-amp AC Breaker (bundled) 1 x Double-pole 60-amp AC Breaker 4 x Jumper Bar (pre-installed) 1 x Handle Interlock Device (pre-installed) 6 x 10 AWG AC Wire (black, pre-wired) 2 x 10 AWG AC Wire (red, pre-wired) 1 x 10 AWG AC Wire (white, pre-wired) 1 x 12 AWG Ground Wire (green, pre-wired) 4 x Terminal buses (one each - L1, L2, Ground, Neutral) 1 x DIN Rail Expansion positions available for up to 8 x single pole AC breakers or 4 x double pole AC breakers
Device short name	SW AC Distribution Panel (230 VAC)
Product dimensions (H x W x D)	26.7 x 20.0 x 11.2 cm (10.5 x 7.9 x 4.4 in)
Shipping dimensions (H x W x D)	82.5.0 x 26.5 x 17.5 cm (32.5 x 10.43 x 6.9 in)
Shipping weight	2.3 kg (5 lb)
Product number	865-1017-61
Included	1 x Distribution Panel Box 1 x Distribution Panel Cover 3 x Single-pole 30-amp AC Breaker (bundled) 1 x Handle Interlock Device (pre-installed) 2 x 10 AWG AC Wire (brown, pre-wired) 1 x 10 AWG AC Wire (blue, pre-wired) 1 x 12 AWG Ground Wire (green/yellow, pre-wired) 2 x Copper jumper wire 1 x DIN Rail Expansion positions available for up to 8 x single pole AC breakers
Compatible products	
Conext SW (230 V)	SW 2524 product no. 865-2524-61 SW 4024 product no. 865-4024-61 SW 4048 product no. 865-4048-61
Conext SW (120 V)	SW 2524 product no. 865-2524 SW 4024 product no. 865-4024 SW 4048 product no. 865-4048
Conext MPPT 60 150	Product no. 865-1030-1
Conext System Control Panel	Product no. 865-1050
Conext SW Stacking Kit	230 Vac product no. 865-1019-61 120/240 Vac product no. 865-1019
Conext Portable Installation and Configuration Tool	Product no. 865-1155-01

Specifications are subject to change without notice.